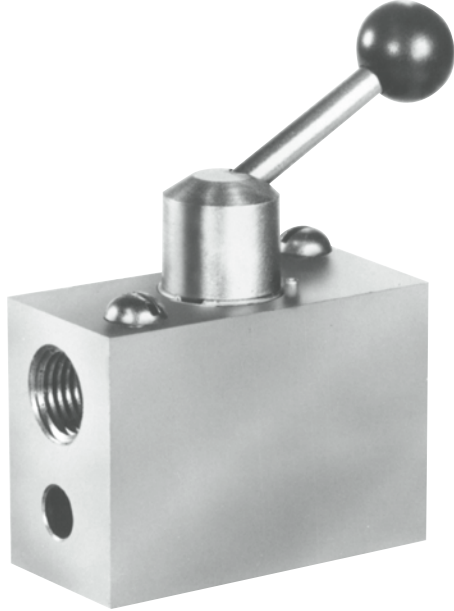


## 9300 Series

*Vacuum to 150 psig Plug Valves 3-way Selector*



### Features

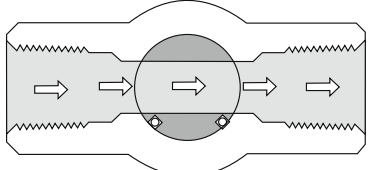
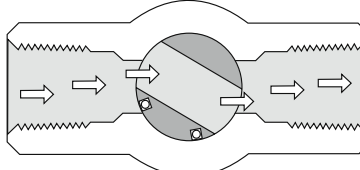
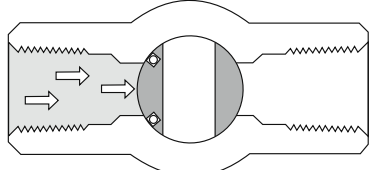
- Leakproof in vacuum or pressure service
- No stem leakage
- Minimum pressure drop
- Very low turning torque
- Effortless, fingertip operation
- Can be used for throttling service
- Positive position indication

### Technical Data

|                                    |   |
|------------------------------------|---|
| <b>Body Construction Materials</b> | Brass   |
| <b>O-ring Materials</b>            | Buna N, Neoprene or Viton®  |
| <b>Operating Pressures</b>         | Vacuum to 150 psig (10 bar)   |
| <b>Proof Pressure</b>              | 300 psig (21 bar)   |
| <b>Burst Pressure (Minimum)</b>    | Over 500 psig (34 bar)  |
| <b>Temperature Range</b>           | 0° F to +400° F (-17.8° C to +204° C)<br><i>Based on o-ring material, see "How to Order".</i> |
| <b>Connection Sizes</b>            | ¼", ½"  |
| <b>Flow Passage</b>                | 0.275" diameter   |
| <b>Leakage</b>                     | Zero—internal and external  |

*Note: Proper filtration is recommended to prevent damage to sealing surfaces.*

### How it Works

|   |   |  |
|---|---|--|
|  <p><b>Open</b></p> <p>Specially machined lipped grooves on the cylindrical surface of the plug hold the flow-sealing o-ring in place. Flow passes through full-port opening with no restriction and minimum direction change.</p> |  <p><b>Closing</b></p> <p>Pressure depresses the flow-sealing o-ring so that they are not damaged or cut when passing ports.</p> |  <p><b>Close</b></p> <p>O-ring completely surrounds the port, sealing off the flow "bubble-tight". One outlet is open when the other is closed. O-rings on diameter of plug prevent inter-port and body leakage.</p> |
|---|---|--|

### Circle Seal Controls

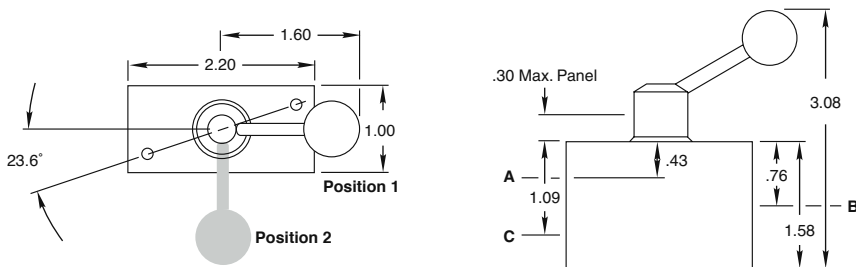
2301 Wardlow Circle • Corona, CA 92880  
 Phone (951) 270-6200 • Fax (951) 270-6201  
 www.circle-seal.com

Shutoff valves

# 9300 Series

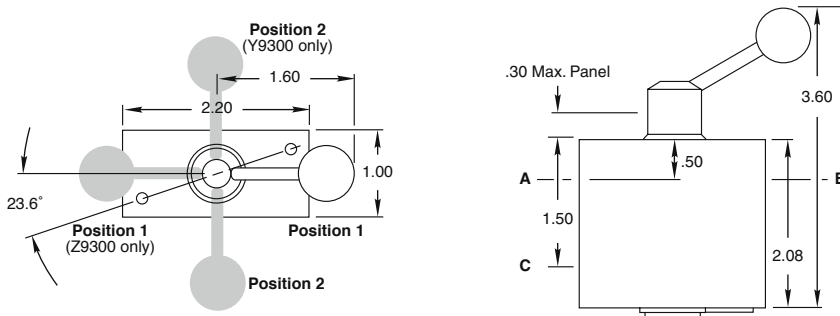
## Dimensions (Inches) & Specifications

### 9300-2PPQ Dimensions



### 9300-2PPP, Y9300-2PPP & Z9300-2PPP Dimensions

Note: Panel mount—2 panel mounting holes, 10-32 UNF-2B threads, .20" deep on 1.75" bolt circle.

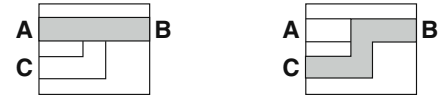


## Types of Operation

### Handle Position 1      Handle Position 2

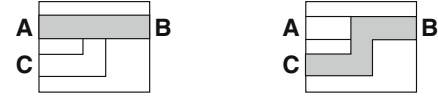
9300-2PPQ & 9300-2PPP Configuration

A Inlet B Outlet C Exhaust



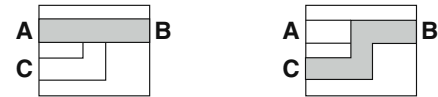
Y9300 Configuration

A Outlet B Inlet C Outlet



Z9300 Configuration

A Inlet B Outlet C Inlet



## How to Order

**Y 93 59 B - 2 PPP**

### VARIATION

- Y One inlet, two outlets
- Z Two inlets, one outlet

### O-RING MATERIAL & TEMPERATURE RANGE

- 59 Buna N (0° F to +250° F)
- 33 Neoprene (0° F to +300° F)
- 32 Viton® (0° F to +400° F)

### END CONNECTIONS (INLET/OUTLET/EXHAUST)

- P Female pipe (NPT)
- Q Open exhaust (2PPQ)

### VALVE SIZE

- 2 1/4"
- 4 1/2"

### BODY MATERIALS

- B Brass

Please consult your Circle Seal Controls distributor or our factory for information on special connections, materials, larger sizes, o-rings, operating pressures, and temperature ranges.

### Repair Kits

In normal service, the only part(s) which may require replacement is(are) the seal(s). A repair kit may be ordered by placing a "K/" in front of the complete part number (i.e. K/9359B-2PPP).

## For Your Safety

It is solely the responsibility of the system designer and user to select products suitable for their specific application requirements and to ensure proper installation, operation, and maintenance of these products. Material compatibility, product ratings and application details should be considered in the selection. Improper selection or use of products described herein can cause personal injury or property damage.